

RO

Wood Repair System WRS for thermoplastic fillers

Robatech
Glueing Technology

Hot-injection system for repairing knot holes, pitch pockets, cracks and other faults in floor boards with a thermoplastic filler of the same colour. Application areas are the production of parquet, panels, windows, massive and laminated board, profiled timber, etc.



RO

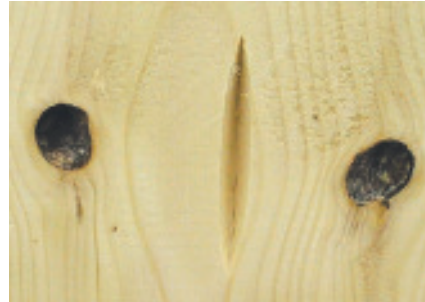
Robatech

Glueing Technology

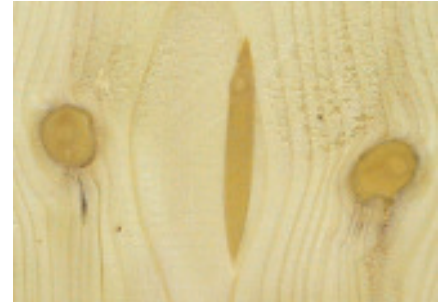
Application

The Wood Repair System permits to repair the surface in question practically without visible marks. The defective spot is filled with a thermoplastic filler which adheres very strongly, hardly shrinks and solidifies quickly.

Pitch pockets, smaller and larger knot holes as well as cracks can be repaired. In the interest of a longer lifetime of the sanding belt the corrected spot is only slightly overfilled. The treated piece of timber can be processed further by sanding or milling within a few minutes and is suitable for lacquering and painting.



Before repair



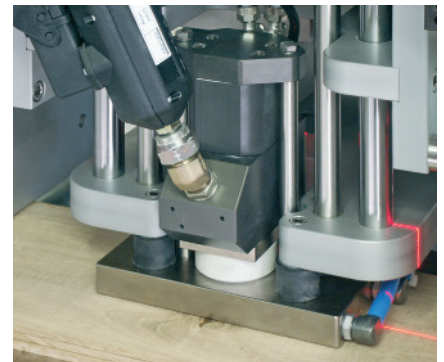
Repaired in 30 seconds



Positioning with the laser cross

Your advantages

- Efficient working without fatigue
- Better filling and reduced consumption in comparison with hand applicators
- High-pressure injection for perfect anchoring of the filler
- Immediately dry and ready for sanding
- No contamination of the adjacent surface and only minor contamination of the sanding belt



Injection head and cooling plate on the workpiece

Process flow

1. The deficient spot is manually placed under the laser cross hairs. Injection is triggered by means of the foot switch or the optional two-hand switch.
2. The head descends onto the piece of wood and the filler is injected under pressure into the defective spot within seconds.
3. The head remains pressed onto the work and the hot filler is cooled down by the cold contact pressure plate.
4. The repair is now finished and the head moves up. The repaired workpiece can subsequently be planed or ground and processed onward.

Technical data

| | |
|----------------------------|--|
| Thickness of workpiece | min. 5 mm, max. 100 mm |
| Width of workpiece | Standard max. 300 mm, option max. 500 mm |
| Injection pressure | Continuously adjustable from 6...72 bar |
| Injection and cooling time | Continuously adjustable from 0...5 seconds |
| Repair time | approx. 1 second for small cracks, 8 seconds for large holes |
| Recommended filler | »Novoryt forte«, in all tones, accord. to customer sample |
| Melting device (standard) | Robatech Concept B5 with 5-litre tank |
| Working temperature | max. 200° C |
| Triggering | By foot pedal or two-hand switch |
| Working height | Standard 1100 mm, adjustment range \pm 60 mm |
| Electrical connection | 400 Volt AC, 50/60 Hz |
| Dimensions L x W x H | 700 x 980 x 2000 mm |
| Option | Processing of two fillers of different colour |

Robatech AG
Pilatusring 10
CH-5630 Muri / Switzerland
Phone +41 56 675 77 00
Fax +41 56 675 77 01
Email info@robatech.ch
Internet www.robatech.com