

RO

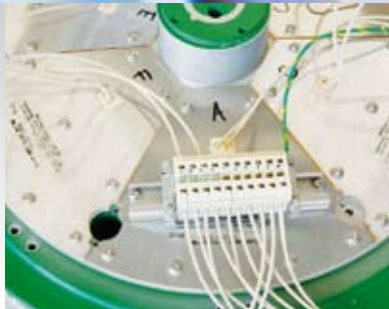
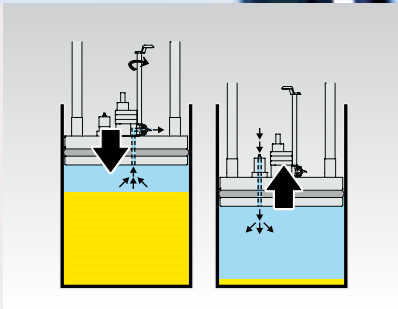
Hotmelt drumunloader Robamelt series



Robatech
Gluing Technology

Robamelt series

Hotmelt - efficient and gentle melting



Modular variants for all requirements

Our drum unloaders of the Robamelt series for the common drum sizes of 200/50/20 litres are suitable to melt different thermoplastic materials such as EVA, PSA, PUR, APAO, butyl, etc.

The appliances operate as stand-alone systems or in a pool with several drum unloaders or a buffer tank. Different pumps are available depending on the adhesive and the required melting capacity. The melting plate has been optimized for the biggest possible surfaces and a minimal residual quantity in the drum. Novel surface heating elements ensure highest energy efficiency. Proven high-performance seals guarantee trouble-free handling of different drums. All components coming into contact with adhesive feature an effective release coating.

The most important performance characteristics of the Robamelt series at a glance:

- Different melting plates
- Optimized residual quantities
- Exchangeable surface heating elements
- Sealed melting plate
- Manual or automatic venting or aeration
- Plate geometry for easy cleaning
- No contact of the adhesive with the atmosphere
- Different pump drive solutions
- Long-life sealing rings
- Precision type gear pumps
- Scoop piston pump for highly viscous mediums
- Modular electronic components
- Modular, compact design and execution
- Easy adaptation to meet customer requests
- Simple to operate and maintain
- Easy accessibility
- System solutions by combination of modules
- Only few spare parts required
- 2-hand operation

... and Made in Switzerland, of course.



Our experience in melting guarantees your productivity

No matter which type of drumunloader meets your requirements: With the RMD20, RMD50 or RMD200 you can select from a comprehensive range of units and models. Our specialists will be pleased to advise you.

Modularity and compatibility

We pay particular attention to maximum upwards and downwards compatibility of the units and accessories as well as system solutions by combination. System components can be adapted depending on drum shapes and sizes.

Gentle handling of PUR adhesive

We know what you expect of our products and have laid out the entire Robamelt system accordingly. The precise closed loop temperature control with manual or automatic temperature reduction and the adaptive melting system ensure a stable viscosity and prevent unnecessary thermal strains on the material. All units are flow-optimized so that no stagnant adhesive can react. The ambient humidity has no chance of

reaching the adhesive. All models are optimized for minimal residual quantities so that as little adhesive as possible is lost.

Simple installation

The drumunloaders of industrially tested design are easy to integrate in existing systems. The interfaces are standardized and enable the communication with the main equipment.

Easy to operate

The schematic operating surface is independent of languages and allows an immediate identification of the current operating status. The diagnostics system supports quick trouble-shooting and elimination of the cause if problems occur.

Reduced energy consumption

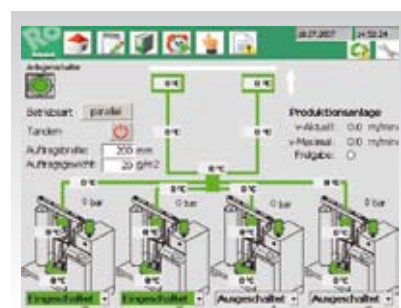
A heating output matched to the surface of the melting plate and the good insulation in combination with intelligent closed loop control make it possible: a high melting capacity with the lowest possible energy consumption.

Highest safety

The proven safety system with temperature limiter and pressure relief coupled with the sequential order of heating protects reliably against excessive temperatures and pressures in the adhesive system. Optional evacuation features for the drum change are available to processors of reactive adhesives.

Low maintenance costs

Robatech systems can be run with a minimal maintenance effort thanks to the use of operationally safe components and straightforward designs ensuring also a good accessibility. Hardly any spare parts are required. Important components such as pumps and controls are available on an exchange basis.



The result of know-how and competence

We know how to apply adhesives. We've been doing this successfully for more than three decades. This is how we achieved a first-class reputation: quality assurance, backed by superior service with know-how and competence.

We draw from this experience for the development of all Robatech products, including the drum unloaders. The optimized shape of the melting plate is just one example.

It has enabled us to achieve high melting capacities and at the same time reduce the residual quantity in the drum. All areas of industry and a great variety of applications benefit from this improvement.

In our production we rely on well-proven materials and sophisticated technologies. In combination with quality-related procedures and inspections the result is exactly what you're looking for:

Highest productivity at low life-cycle costs.

All you need for your production System extensions, Optionen und Zubehör



We supply you with absolute top-grade products and support you with our knowledge and experience. Further services are available on request. Let's talk to each other – for example about:

System extensions

- System integration in the main machine via: Profibus, SNMP, Ethernet, CAN-Bus, ASI-Bus or RobaPAR

Options and accessories

- Quantity control
- Electronic pressure monitoring and control
- Level supervision
- Plate with 1 or 2 seals
- Viton or Teflon plate sealing rings
- Lamp tower
- Elevated chassis
- Floor mounting
- Gear pumps in 6 sizes
- Distributor for tandem operation
- Pressure sensor
- Bursting screw
- Bypass solutions
- Drums
- Drum holder for cardboard drums
- Evacuation device
- Service
- Operator training
- Preventive maintenance

Headquarters
Robatech AG
Pilatusring 10
CH-5630 Muri
Switzerland
Tel. +41 56 675 77 00
Fax +41 56 675 77 01
info@robatech.ch
www.robatech.com

Robatech USA Inc.
11660 Alpharetta Hwy
Suite 360
USA-Roswell, GA 30076
Phone +1 770 663 8380
Fax +1 770 663 8381
info@robatechusa.com
www.robatechusa.com

Robatech
Gluing Technology